



Product Overview

Garage doors

Operators

Hinged Doors

Partition walls

Industrial doors

Loading technology

HÖRMANN

Up-and-Over Garage Doors

Boasting the sales volume of 13 million



The up-and-over garage doors result from the combination of good quality and advanced technology with long-term functionality and safe operation. The doors are available in various steel designs and ribbed or paneled look to make your garage door to be looked as beautiful as timber doors. In addition, various colors and surface finishes are available for your choice to create a more wonderful experience.

Sectional Garage Doors

Vertically opening, good-quality garage doors



Sectional garage doors open vertically, thus providing more space inside and in front of the garage to park your cars. Boasting delicate designs, sectional garage doors are the ideal choices for modern architectures.

With regard to convenience and design, we provide you with diverse choices: single-layered or double-layered steel thermal-insulated panels, various finishes and colors as well as Decograin surfaces. A wide range of other options including wicket doors with trip-free threshold or other choices with the same style are also available to meet your diverse requirements.

From Hörmann:
Reliable thermal insulation
with ThermoFrame connection

Side Sliding Sectional Doors

With multiple ways of manually or electrically opening



Thanks to their design, side sliding sectional doors are suitable for many architectural situations, even for the specially designed constructions with roof slopes. The full passage height can be maintained as well. The doors ensure good sound and thermal insulation through 42-mm-thick double-layered steel door plates as well as PU-foamed sandwich panels. In addition, a second opening width can be set on request to facilitate the passage. The doors can be conveniently operated via a hand transmitter or the optional door handle with wireless module.

Roller Garage Door RollMatic

The automatic roller garage door from Hörmann



RollMatic roller garage doors are the ideal space-saving option. Their design concept permits full use of the garage ceiling area. The good quality, corrosion-free aluminium door profiles guarantee a long service life. RollMatic roller garage doors are equipped with modern Hörmann operator technology as standard. Nine colors and two attractive Decograin timber design surfaces provide numerous design possibilities.

***From Hörmann:
With innovative tension
spring technology***

Garage Door and Entrance Gate Operators

Compatible operator solutions from Europe



Garage door operators provide more convenience and security. Well thought-out details such as the patented anti-lift kit and reliable automatic safety cut-out offer better protection against break-ins and more security for you and your family. The wide range of compatible accessories and powerful **entrance gate operators** for hinged and sliding gates make coming home even better.

Remote control and BiSecur App

The modern system for your home



The **BiSecur** radio system is characterised by a good level of convenience, certified safety and its award-winning design. With the convenient door position query function, you can see whether your door is closed at the press of a button. The secure BiSecur encryption protocol makes sure that no-one can copy your radio signal. It was tested and certified by security experts at Bochum University.

NEW:
*BiSecur Gateway with App – the
SmartHome solution from Europe*

Sliding Gate

Self-supporting construction, reliable security standards



The **commercial and private System gates** from Hörmann are ideally suited to their respective surroundings. In addition to the various standard designs, which are delivered ready for installation, these system gates can be adapted in line with requirements thanks to their modular design.

The modular design, which makes use of various profile lengths, keeps material wastage to a minimum and makes a noticeable difference to the price since the use of material is optimized automatically. Moreover, project-specific entrance gates can be manufactured according to the customer's requirements. Self-supporting gates, which are suspended above the ground and made of glass and other innovative materials, are used and make these entrance gates distinctive.

Automatic Bollards

Innovative automatic access control technologies



A wide range of **automatic rising bollards** are different in mechanism, dimensions and security levels. PAS68, DOS and ASTM certifications achieved through years of improvements make our range complete and trustworthy.

Another powerful strength is its wide range: we can provide a wide scope of application fields ranging from residential security installation to a higher level of anti-terrorism securities. Our products and accessories always provide for the possibility to find the ideal solution to satisfy any needs regarding management, safety, and design.

*From Hörmann
Wide range application from residential security to
anti-terrorism security*

Entrance Doors

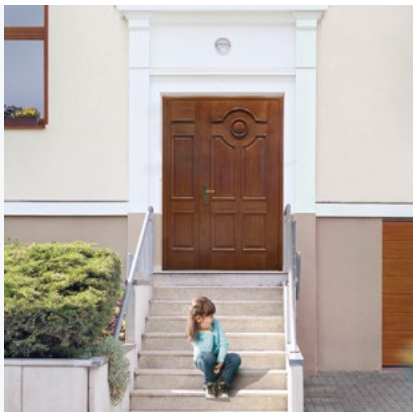
Convenience and security for your home



The wide range of Hörmann **steel entrance doors** sets clear accents: both visually in terms of their elegant appearance and good-quality workmanship, and technically with their good insulation and security standard. Besides, Hörmann steel entrance doors are also distinguished by a large selection of styles and their attractive price/performance ratio.

Schwarzwald timber series

The Schwarzwald model features classic timber patterns that never go out of style. It is an ideal combination of supreme German quality and soft timber in a variety of patterns to suit any style.



Zugspitze decoration series

The Zugspitze line is diverse and characterized by smooth lines and classic yet modern attitude. We not only endeavor to offer the ideal security protection, but also artistic details in our designs. With a selection of multiple shapes and colors of good-quality materials, our products come in a variety of styles to complement any preference.



Bodensee design series

Bodensee surface finish is an ideal combination of exquisite feature integration and German craftsmanship. Available for powder coated surface, Decograin surface and Silkgrain surface.



**Wide range of surface finishes: Schwarzwald/
Zugspitze/Bodensee**

Steel Interior Doors

For all applications in the residential
and public building sector



Steel interior doors are integrated with good quality and numerous optional extras and colors. They feature not only well robust, dimensionally stable and hard-wearing, but also ideal thermal insulation and acoustic insulation. Steel interior doors are the ideal choice for both residential and public building application with different requirements,.

Hörmann Smart lock

A new way to experience easy life



Hörmann Smart lock integrates fingerprint, IC card, password and mechanical opening modes. It is compact and powerful with Swedish advanced living fingerprint identification technology, accurate identification to eliminate artificial fingerprints. IC card double encrypted by Hörmann, refuses to copy, safe and reliable. Anti-peeping virtual password function, stop peeping, all-round security protection. Italy high level security cylinder, With high carbon anti-drilling steel bar in the cylinder, anti-drilling cover in front of cylinder for further, to prevent violent opening. Hörmann Smart lock overall smooth design, elegant and beautiful. Double authentication mode can be set, fingerprint, IC card, password combination of any two ways, double security, perfect protection of your loved home.

**From Hörmann:
Intelligent, convenient and secure**

Door Operators

More convenience every day



With the Hörmann **PortaMatic** door operator you can automatically open and close your steel internal doors via hand transmitter or remote push button that will make your everyday life easier.

The Hörmann door operator HDO 200 / 300 for heavy-duty doors also offers fascinating and innovative technology that provides you with more comfort.

Anti-insect screen shutters and doors

Ideal protection throughout summer season



Hörmann's new **insect protection** programme includes flexible insect-repelling roller shutters, low-cost stenter frames, and convenient hinge and sliding doors. All products are equipped with an especially durable standard gauze that provides reliable protection against bothersome insects. Benefits for everyone:

- Custom-made for every window and door
- Elegant, long-lasting design
- Ideal operating comfort

Elegant design, custom colors

Fire-rated Doors

Systematic fire protection



Hörmann provides **fire-rated doors** not only in accordance with Chinese standard, but also British standards, Malaysia standard and Vietnam standard. All doors strictly designed and produced according to the relevant standard of each country. In the near future, Hörmann will bring more fire-rated doors in accordance with different standards to APAC market. With Hörmann **fire-rated doors**, you will benefit from decades of quality and safety.

Multi-Purpose Doors

The ideal solution for any requirement

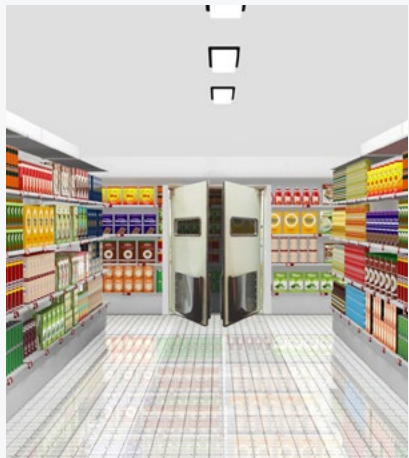


Hörmann **steel multi-purpose doors** are sturdy and durable while also providing better thermal and sound insulation performance. Door leaf can be fitted with not only various glazing and louver, but also special hardware and cut-outs on request, providing better solution for doors as needed.

Sturdy structure and better insulation

Swing Doors and Impact Swing Doors

For double action transportation



Hörmann **steel swing doors** are ideal solution for passages where two-way opening operations are performed frequently. The stainless steel protective plates not only decorative, but also protect door leaf. The various glazings provide convenient visibility.

The door leaf of steel impact swing door features not only two-way opening, but also reinforced design and impact-resistant padding, protect it from crash damage, make the passage convenient and efficient. The standard DURATEC scratch resistance glazing provide more light into the building.

Steel Sliding Doors

Space-saving and gentle operation



Hörmann **steel sliding doors** are the ideal choice for barrier free areas. Hörmann offers manually and electrically operated sliding doors. These doors can also be customized for further functions to meet individual requirements, such as airtightness and safety. The door leaves are light yet strong and easy to open for the aged, disabled and children. They are suitable not only for medical and health care facilities, but for all kinds of public application. As the door leaf needs no pivoting radius, it saves interior space effectively. Good-quality optional hardware and the door-closing buffer, as well as the electric control system, allow gentle door opening and closing.

**From Hörmann:
Electric steel sliding door with
certified hermetic function**

Steel partition system

Clear space segmentation solution



Hörmann **glass doors and partition wall** can be easily installed without changing a building's structure, and are the ideal solutions for partitioning open space. With ingenious designs and good-quality materials, Hörmann makes every effort to create a bright and clear working environment for you. Various design films and movable blinds for partition walls, gives you both interior brightness and privacy.

Steel Tubular Doors and Partition System

The sturdy and full transparent system solution



Hörmann **steel tubular door and partition system** are made of sturdy good-quality steel tubular and fully glazed structure. The bright glass and slim tubular will provide more light and better visibility, letting you enjoy the sunlight and scenery with great transparency and visual experience.

Steel tubular doors enable flexible designs including single leaf, double leaf and other combinations. We can offer you individual, delicately proportioned solutions which do justice to every demand placed on design and aesthetics to satisfy architecturally challenging or unusual requirements without compromising safety.

From Hörmann:
Available for thermal insulation
and fire-rated function

Industrial Sectional Doors

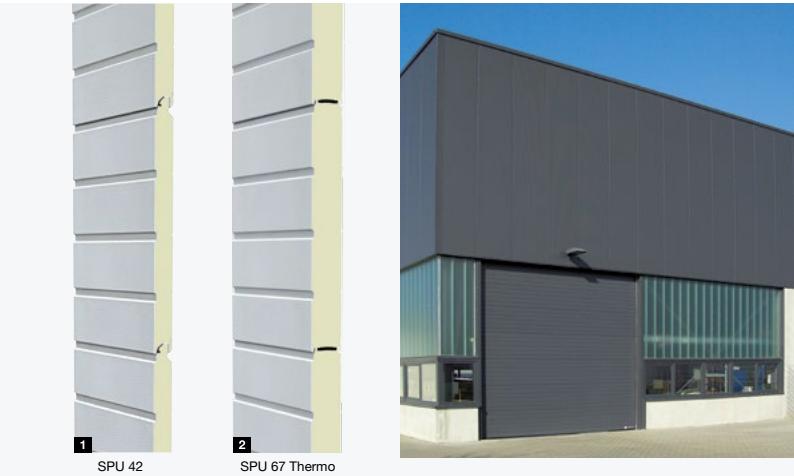
Steel and aluminium door section 42 mm



With numerous combination and equipment options and well matched operator and control technology, Hörmann **industrial sectional doors** offer the ideal solution for all applications. Whether with double-skinned insulated sections or with extensive or partial glazing, the possibilities are numerous. With the new designed SPU 40 XL, Hörmann industrial sectional door provides ideal solution for big opening width up to 11,400 mm.

Thermal Insulated Sectional Doors

Steel sections 67 mm with thermal break



The **thermal insulated industrial sectional door SPU 67 Thermo** features good thermal insulation with sections with thermal break, depth 67 mm, lowering temperature losses at door openings, making it ideal for use in food, cold logistics and commercial buildings. This also reduces the formation of condensation water inside of the door.

Rolling Shutters and Rolling Grilles

Sturdy and reliable in tough daily use



Hörmann **rolling shutters and rolling grilles** feature an amazingly simple design with a minimum number of components available for both manual operated and power-driven door types. The sound door technology has proven itself in a number of areas. These include, for example, industrial, commercial and logistics applications, but also collective garages and night security doors in shopping arcades.

High-Speed Rolling Shutter



High-speed rolling shutter SR 9000 is a class above traditional rolling shutters. With direct-drive, springless operation, strong panel and fast operating speeds, this revolutionary good performance rolling shutter is the model to choose as an alternative to traditional rolling shutters in high cycle applications.

From Hörmann:
Fast, secure rolling steel doors
in high cycle applications

High-Speed Doors

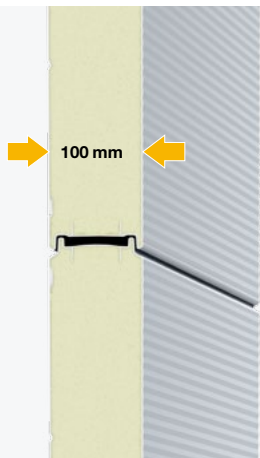
For all applications



Hörmann **high-speed doors** are designed for both interior and exterior use to optimize the traffic flow, improve room conditions and save energy. The Hörmann programme includes vertically opening transparent doors with flexible curtains, as well as insulated spiral doors and sectional doors. Thanks to standard equipment with the FU frequency converter control, safety light grille or photocell, these doors are exceptionally safe and efficient.

High-Speed Doors

For special applications



Thanks to its 100 mm sections with thermal break and special seals for the building structure and floor, the **ISO Speed Cold** is the ideal solution for all areas with high temperature differences. Used as a high-speed door in cold-storage areas or to save energy in production and distribution areas, the **ISO Speed Cold** remains impervious.

High-speed door V 3015 Clean is designed for clean rooms with pressure differences up to 50 Pa which caused by air purification system. The fully transparent curtain of this clean room door is tightly integrated in the special side to minimize air loss (leakage). This enables an ideal design for ventilation systems. A stainless steel cover on the shaft and operator, and welded-on spring steel stabilization are further characteristics of this door.

Loading Technology

Complete solutions for more efficiency



Smooth loading and unloading processes require well matched individual components, from manual and power-driven **dock leveller** to flap **dock shelter** and inflatable **dock seal**, as well as the corresponding **industrial doors** and **control systems**. This is why Hörmann develops and manufactures all components of **loading technology systems** in-house.

Hydraulic dock leveller with sectional door and flap dock shelter is the ideal choice to the loading bay used by lorries with different loading heights, A lorry tail lift can be moved underneath the dock leveller. With suitable dimensions, it can also be used for the loading of heavy goods.



For temperature-controlled buildings, we provide thermal insulation solution by a thermal insulated sectional door positioned in front of the telescopic dock leveller, to minimize thermal losses during the periods that goods are not being loaded at the loading bay and the door is closed.

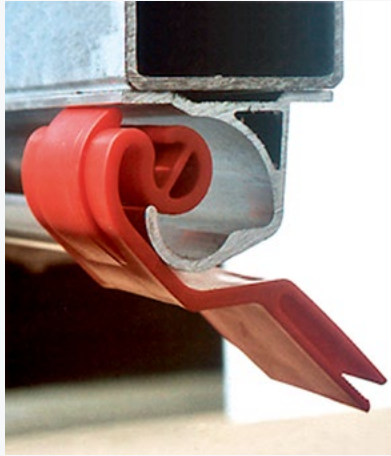


To fully utilize your space in the workshop, you can move the dock leveller into loading house in front of the building. The hydraulic dock leveller allows docking of lorries with different loading heights. In addition, the double-skinned insulated industrial door seals the building well.



Strip Curtain

The clear solution for every door opening



Hörmann's flex **strip curtains** are suitable for use as inexpensive doors for large warehouse openings. The durable UPVC strips provide effective sealing to a large area and can be opened up just enough to accommodate the width of a vehicle or load. This reduces temperature loss to a minimum, even with heavy through-traffic. The good transparency of flex **strip curtains** improves lighting conditions and reduces lighting costs, which is suitable for use in food or medication production and in cold store areas.

Operators and Controls

Ideal safety and reliability



All major door and operator components are developed and manufactured by Hörmann. Our expertise and care ensure that you receive an ideally matched, tested and certified system comprised of door, operator and control.

Hörmann also develops **special control construction** solutions that can fully meet your individual requirements in terms of quality, function, reliability and efficiency.

Individual solutions in serial quality

Hörmann: Quality without Compromise

Hörmann is a professional manufacturer worldwide that offers you a complete range of major building products from one source.

We manufacture in specialized factories using the advanced production technologies.

The comprehensive manufacturing, sales and service network in Europe, Asia and America makes Hörmann your strong international partner for the high-quality construction.

“Quality without Compromise”.

GARAGE DOORS

OPERATORS

HINGED DOORS

PARTITION WALLS

INDUSTRIAL DOORS

LOADING TECHNOLOGY

www.hoermann.cn

All information and images are protected by copyright. No part of this brochure may be reproduced without our permission. Subject to changes.

Issue 09, 2019 / Print 09, 2019
Some of the doors shown in this brochure have special features and therefore do not always represent the standard version.

HÖRMANN